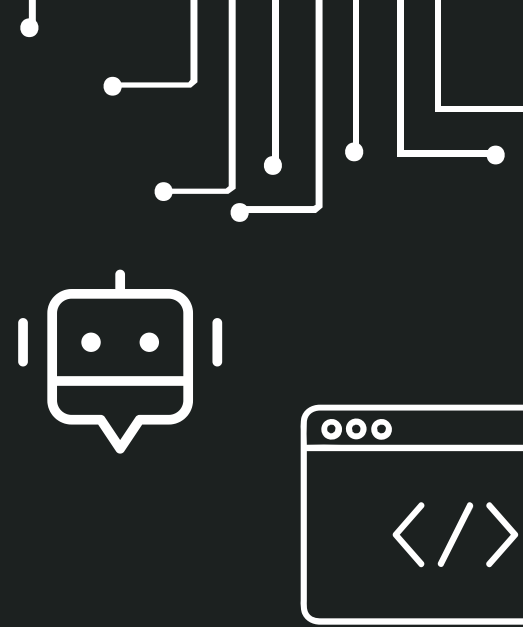


ML@P

Machine Learning at
Purdue

**SPONSORSHIP
PACKET**

2023-2024





WHO ARE WE?

ML@P is a group of students passionate about discussing and working on projects related to all aspects of AI and ML. Our organization welcomes individuals of all skill levels, from beginner undergraduates to more advanced graduate students. We strive to support AI/ML interests in all fields and provide events tailored to each level of experience.

**850+ STUDENT
REACH**



WHAT MOTIVATES STUDENTS TO JOIN US?

AI/ML Projects

Students of all skill levels can join an AI/ML project that interests them! It's an inclusive environment where students can learn to collaborate on challenging problems and gain hands-on experience.

ML Talks

Students can gain insights and knowledge from experienced industry speakers who share their expertise on a wide range of AI/ML/CS topics.

Social Events

Students get to network directly and easily with other members of the AI/ML community. This includes project standups, ML Talks, and various social events!

Leadership Roles

Students can expand on their leadership skills by becoming a project manager and start an AI/ML project backed by the club or becoming an officer on one of our subteams!

ACHIEVEMENTS

VEX Robotics AI Competition

Published a technical paper
Pac-Man Pete: An extensible framework for building AI in VEX Robotics

Algo-trading Team

Placed 54/498 at CME 2022 - University Trading Challenge

TE Connect Awards

2021-22: 3rd Place, 1 Patent
2022-23: Best Innovation Award, 2 Patents

Lightning & Wildfires Research Group

Started as an ML@Purdue project, now absorbed by Official Purdue Research Group



WHY SPONSOR US?

As a valued sponsor, you can support us in various ways, such as providing server access, cloud credits, or other forms of donation. We are also eager to explore potential collaborations on various business challenges!

You will have access to connect with some of our brightest minds in the machine learning field at Purdue University. Our members are driven by innovation and carry unique skill sets in various industries.

Your Impact

By becoming a sponsor, you'll be contributing to the success of our remarkable ML projects, enabling travel opportunities for our competitive teams, and ensuring that our events are enhanced with food and swag.

Thank You!

Please reach out to us with any questions!

aiml@purdue.edu



Tier 4: MLP Maestro (\$2000+/yr)

- Name and logo on t-shirts
- Name and logo on all social media
- Tier 1, 2, and 3 Benefits

Tier 3: Neural Network Ninja (\$1500/yr)

- One event per semester
- Tier 1 and 2 Benefits

Tier 2: SVM Sorcerer (\$1000/yr)

- One annual event
- Logo/Name on Website
- Tier 1 Benefits

Tier 1: Perceptron Pro (\$500/yr)

- Member resumes
- Advertising for all ML@Purdue events